

# Jordanhill School

---

## Primary Parents Survey 2015



Jordanhill School



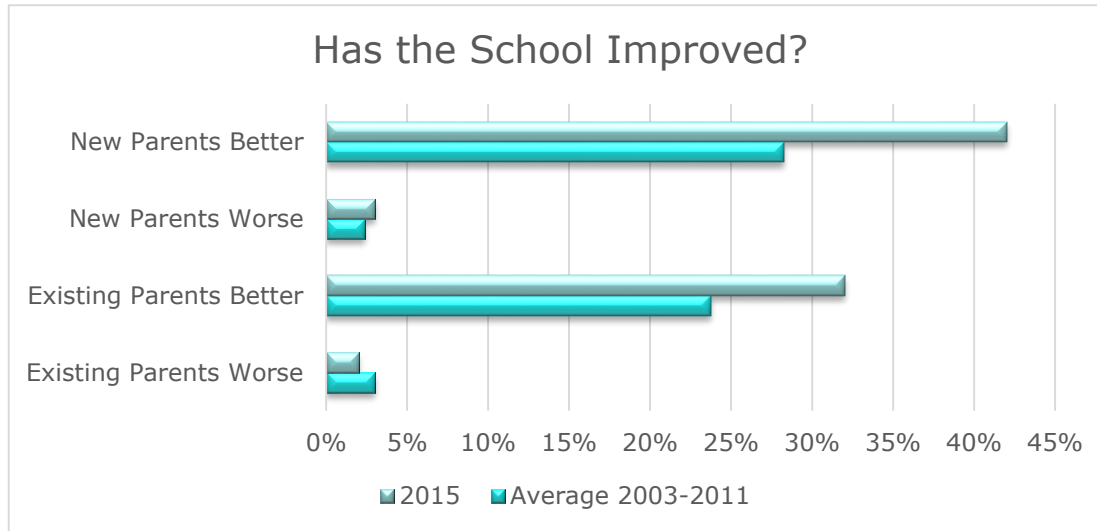
# Primary Parents Survey 2015

---

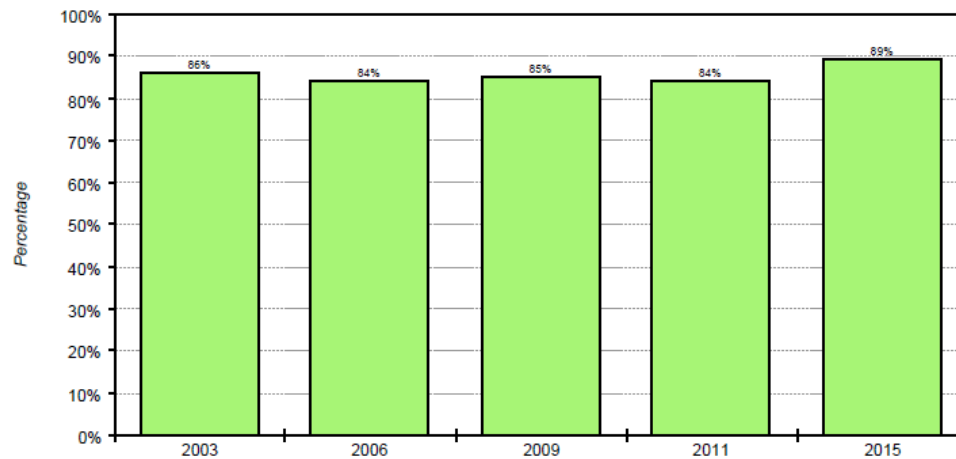
- 132 completed questionnaires were returned representing a response rate of 28.6%
- The response meant that meaningful data could be drawn in most aspects. However, the response rate was much lower than previously and the Board will give further consideration to using online surveys.
- The parents gave an excellent overall performance score (**88.6%**)
- Of the parents whose children were not in their first year at the school **32%** said the school had improved over the last year and **2%** thought that the school's performance was worse
- Of the parents of new pupils, **3%** felt that the school had not lived up to their expectations and **42%** said the school was better than they had expected it to be



# Trends



Graph showing the overall performance scores trend broken down over time.

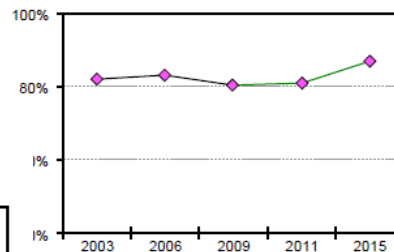


# What are we really good at?

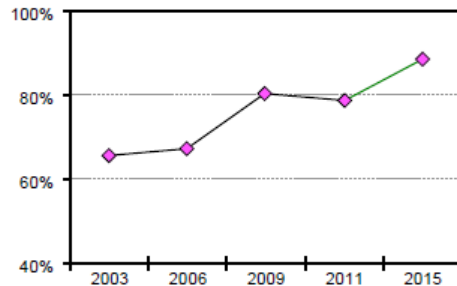
Compared to national norms  
parents rated us as outstanding on

- School facilities
- Library facilities
- Teaching quality
- Caring teachers
- School discipline
- Happiness of child
- Community spirit
- Developing moral values
- School communication
- Developing confidence

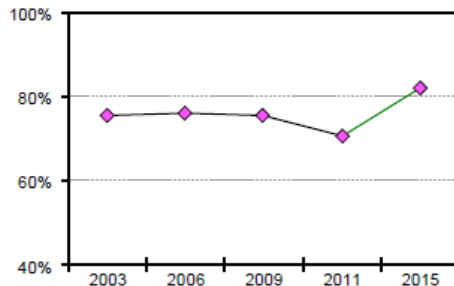
Teaching quality



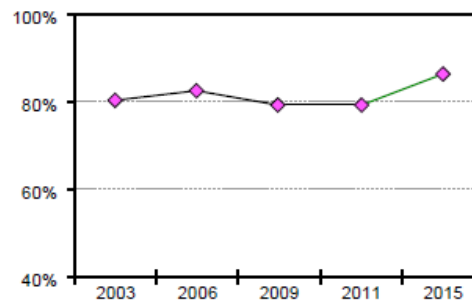
School facilities



School communication



Caring teachers

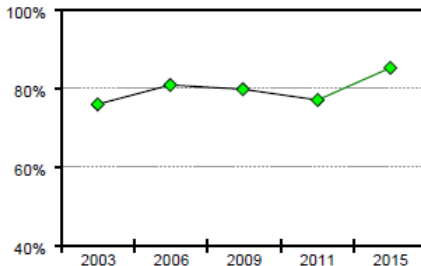


Developing confidence

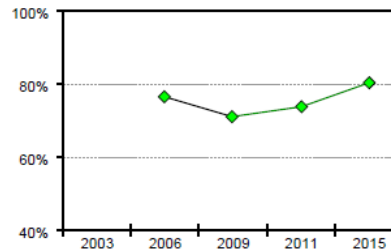


# What are we really good at?

Quality of school management

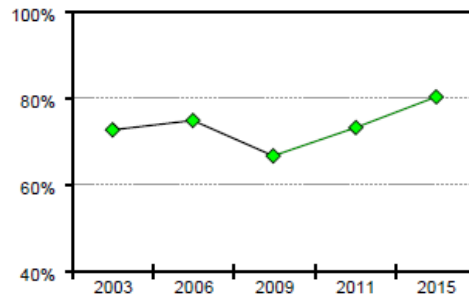


Access to staff



- School uniform
- Quality of school management
- Written reports
- Celebrating and rewarding achievement
- Access to staff

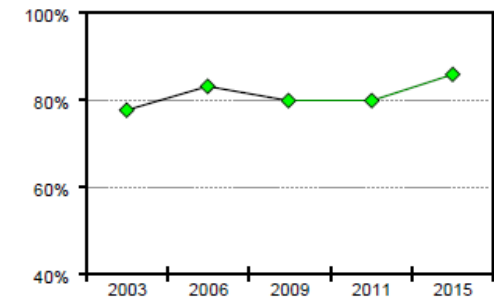
Celebrating and rewarding achievement



Written reports



School uniform



# Where could we improve?

Class size is a factor over which the Board or school has little control.

There has been no reduction in teacher numbers in Primary in over 10 years other than class size in P3 moved from 33 to 22 in 2011 in response to a reduction in grant from Scottish Government.

P1 and P2 are in classes of 22

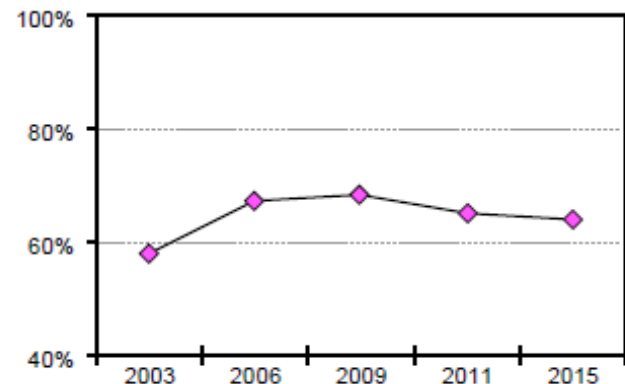
P3-P7 are in classes of 33

- P3-P5 often work in smaller groups due to team teaching
- P6-P7 spend 50% of the week in smaller groups especially when working with secondary staff

Compared to national norms parents rated us less well on only one criterion

- Suitable class sizes

Suitable class sizes



# Relative Importance

The survey asked parents to identify the 10 most important of the 20 core criteria. Your top 6 responses shown.

Criteria	Importance score (%)	Importance ranking	Average ranking for similar schools	Ranking difference to similar schools
Teaching quality	92.0	1st	2nd	+1
Developing potential	89.0	2nd	7th	+5 ▲
Developing confidence	88.0	3rd	6th	+3
Happiness of child	84.6	4th	3rd	-1
Caring teachers	81.3	5th	5th	0
School discipline	79.9	6th	1st	-5 ▼



# Relative Priorities for Improvement

---

Parents were then asked to choose 1 of the 20 core criteria as the most important for improvement. Your top 6 responses are shown.

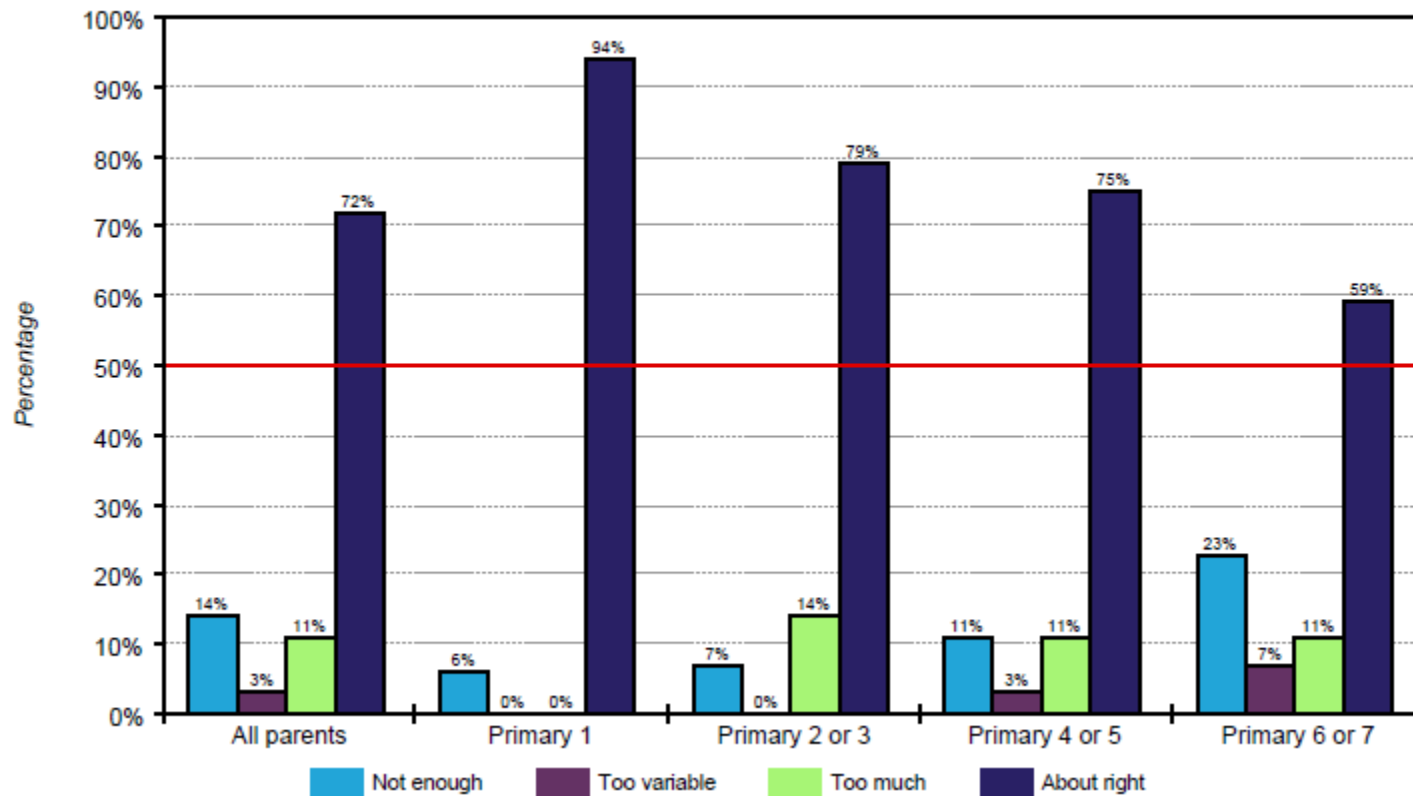
Criteria	This survey (%)	Previous survey (%)	Similar schools (%)
Suitable class sizes	21.5	22.7	9.0
Developing potential	12.5	7.6	12.5
Developing confidence	9.2	5.8	4.7
School communication	7.8	9.2	11.4
Out of school activities	7.0	8.5	8.8
Control of bullying	6.9	13.0	8.4





# Homework

Parent perceptions of the amount of homework given



# Academic Stretch

---

Academic stretch percentages	Not pushed hard enough		Pushed too hard	
	Yes	No	Yes	No
<b>This survey</b>	23.4	76.6	2.6	97.4
<b>Similar schools</b>	32.5	67.5	6.5	93.5

