

Leadership Team



Rector: Dr Paul Thomson

The Rector manages the school on behalf of and as directed by the Board of Managers and is principal adviser to the Board on educational policy and practice. All aspects of the running of the school are his responsibility.



Depute Rector: Mrs Christine Robertson

In addition to deputising for the Rector, the Depute is responsible for the coordination of all pupil support functions, leading the staff development core team and a range of quality assurance functions.



Head of Primary: Mr Richard Buchan

The Head Teacher (Primary) is responsible for the leadership and strategic management of the Primary department including development of the curriculum.



Bursar: Miss Wendy Grant

The bursar is responsible for finance, administration, estates management and the overall supervision of support staff.



Depute Head Teacher Secondary: Ms Susan McDade

Co-ordinates all aspects of provision relating to S4-S6: Captains and prefects, S4 and S5 course choice, behaviour management, reporting and parental communications.

Additional responsibilities: SQA coordinator and Captaincy team.



Depute Head Teacher Secondary: Mr Andrew Fraser

Co-ordinates all aspects of provision relating to S1-S3: S2 course choice, behaviour management, reporting and parental communications.

Additional responsibilities: Staff development in Secondary, school trips and staff cover.



Depute Head Teacher Primary: Mr Robin Paton

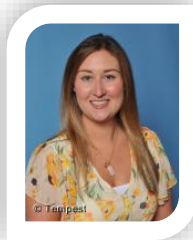
Deputises for Mr Buchan and is responsible for the day-to-day running of the Primary department including behaviour management, staff cover and all aspects of finance.

Additional responsibilities: School Prizegiving Ceremony

Support for Pupils



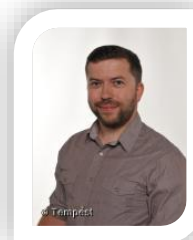
Miss McIntyre



Miss Templeton



Mrs Atkinson
Support for Learning



Mr McMaster
Head of Crawford



Mrs Thomson
Head of Smith

Pupils have a right to feel safe and secure, both physically and emotionally, when they come to school. The school's overall approach to developing relationships and positive behaviour is set out in our [Safe School](#) leaflet.

We provide an environment that is conducive to learning in which pupils feel valued and respected and are appreciated for their achievements and feel confident in their ability to improve.

In Primary, the class teacher is the principal provider of support for pupils. This is coordinated by promoted staff with further input from Pupil Support Assistants and the Support for Learning department.

All Secondary pupils belong to one of four Houses with siblings in the same House. Each House is led by a Principal Teacher of Pastoral Care.

Each House group from S1-S5 has a tutor with each tutor responsible for 25 pupils. The tutor

- Knows your child as an individual and works with them at all key points
- Is normally the first point of contact between home and school
- Acts as register teacher and monitors attendance
- Teaches personal, social and health education (PSHE) to the class
- Monitors academic and personal development

Support for Learning coordinate the response to learning needs or disability.

The Heads of House

- Manage the Tutor teams
- Deal personally with pupils in S5 and S6; teach PSHE to S6
- Coordinate aspects of one or more key functions
 - Transitions
 - Pupil Councils
 - PSHE curriculum
 - Careers
 - Enterprise
 - UCAS applications



Ms Ritchie
Head of Montgomerie



Mrs Dunlop
Head of Montgomerie



Miss Trevena
Head of St John