

Leadership Team



Rector: Mr John Anderson

The Rector has overall responsibility for the running of Jordanhill School. He sets the direction for ongoing improvement and is the principal adviser to the Board on educational policy and practice.



Depute Rector: Mr Douglas Brown

In addition to deputising for the Rector, the Depute is responsible for the coordination of all pupil support functions, discipline, safeguarding, leading the staff development core team, and a range of quality assurance functions.



Head of Primary: Mr Richard Buchan

The Head Teacher (Primary) is responsible for the leadership and strategic management of the Primary department including development of the curriculum.



Bursar: Miss Wendy Grant

The bursar is responsible for finance, administration, estates management and the overall supervision of support staff.



Depute Head Teacher Secondary: Ms Susan McDade

Co-ordinates all aspects of provision relating to S4-S6: Captains and prefects, S4 and S5 course choice, behaviour management, reporting and parental communications.

Additional responsibilities: UCAS, SQA coordinator and Captaincy team.



Depute Head Teacher Secondary: Mr Andrew Fraser

Co-ordinates all aspects of provision relating to S1-S3: S2 course choice, behaviour management, reporting and parental communications.

Additional responsibilities: Staff development in Secondary, school trips and staff cover.



Depute Head Teacher Primary: Mr Robin Paton

Deputises for Mr Buchan and is responsible for the day-to-day running of the Primary department including behaviour management, staff cover and all aspects of finance.

Additional responsibilities: School Prizegiving Ceremony

Support for Pupils



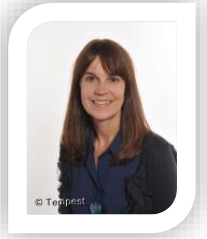
Mrs Atkinson

Support for Learning

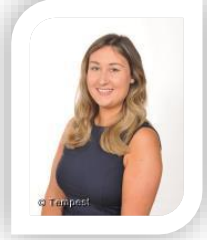
Young people may experience difficulties in their academic progress or relationships with others at any stage. We find it most useful if contact is made at an early stage to discuss such difficulties. Please do not allow problems or uncertainties to remain unaddressed. Parents can contact us to discuss any matter of concern.

- Primary 1 & 2 Miss McIntyre, PT Primary
- Primary 3 & 4 Mrs Benjamin, PT Primary
- Primary 5 to 7 Mr Paton, DHT Primary
- Secondary Head of House

The above staff can arrange meetings with individual teachers as required.



Miss McIntyre



Mrs Benjamin

We provide an environment that is conducive to learning in which pupils feel valued and respected. The school's overall approach to developing relationships and positive behaviour is set out in our [Safe School](#) leaflet.

In Primary, the class teacher is the principal provider of support for pupils. This is coordinated by promoted staff with further input from Pupil Support Assistants and the Support for Learning department. Emma McIntyre and Ashley Benjamin are our two Primary Principal Teachers who provide leadership and advice to Primary colleagues. In addition, along with Mr Paton and Mr Buchan, they provide pastoral support for pupils and their families in the Primary department.

Meeting Additional Support Needs: Many pupils require additional support at some stage in their school career to help them overcome barriers to learning. Pastoral care staff will respond to social, emotional and behavioural needs.

Support for Learning coordinate the response to learning needs or disability. Our head of Support for Learning is Mrs Atkinson. She works closely with class teachers to help support pupils and oversees a team of staff to help pupils from Primary 1 through to S6.

Parents are always consulted prior to support being provided. Help with learning is available to both Primary and Secondary pupils and, as far as possible, is provided within the normal classroom structure.

Baseline assessment of all pupils is undertaken in P1 with a variety of other screening of all pupils being carried out from P2 to S1 to try and ensure that the needs of each child are accurately identified and responded to. Additional assessment may be carried out by Support for Learning staff and/or our educational psychologist as the need arises.

If your child has Additional Support Needs, whether recorded in any way or not, you must notify the school of these at the earliest possible stage so that we can make any reasonable adjustments. More detailed information can be found in the school policy statements on **Accessibility** and **Assessing Children's Educational Needs** and in the **Admissions Regulations**.

Educational Psychologist: The School has the assistance of an educational psychologist. Parental approval is always sought before referral and all findings are fully discussed with parents by the psychologist and appropriate staff. **Enquire** offers independent, confidential advice and information on additional support for learning: 0845 123 2303 info@enquire.org.uk www.enquire.org.uk

The secondary house system

All Secondary pupils belong to one of four Houses with siblings in the same House. Each House is led by a Principal Teacher of Pastoral Care.



Head of Crawford

Mr McMaster



Head of Montgomerie (0.8)

Ms Ritchie



Head of Montgomerie (0.2)

Principal Teacher Development

Mrs Iafrate



Head of Smith

Mrs Thomson



Head of St John

Miss Trevena

The Heads of House

- Manage the Tutor teams
- Deal personally with pupils in S5 and S6; teach PSHE to S6
- Coordinate aspects of one or more key functions
 - Transitions
 - Pupil Councils
 - PSHE curriculum
 - Careers
 - Enterprise
 - UCAS

Each House group from S1-S5 has a tutor with each tutor responsible for 25 pupils. The tutor

- Knows your child as an individual and works with them at all key points
- Is normally the first point of contact between home and school
- Acts as register teacher and monitors attendance
- Teaches personal, social and health education (PSHE) to the class
- Monitors academic and personal development

Personal Social and Health Education

All pupils participate in a PSHE programme which aims to develop personal skills and attributes such as self-confidence, citizenship, enterprise, and team-working through a range of relevant topics including Personal Safety, Relationships, Health Education, Study Skills and Careers Education.

Many of the [In Focus leaflets](#) on our web site offer insight into PSHE. Please contact your child's Head of House if you wish further information about the content or modes of delivery of any aspect of PSHE.



Jordanhill School

